

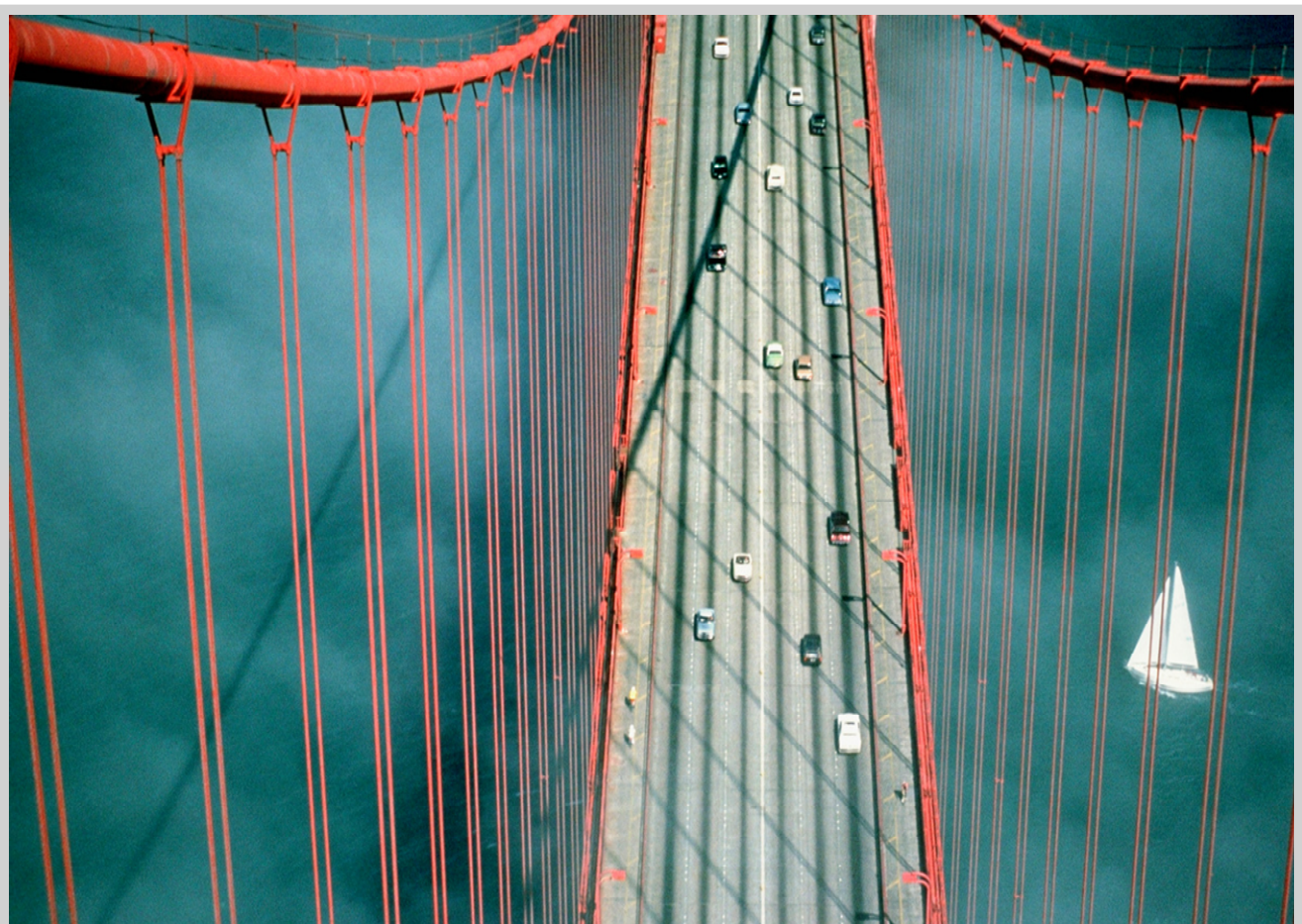
# PicLink II documentation overview

---

## Global overview

Christian Studer | 21.08.2020

---



---

# Table of Contents

<b>Introduction</b>	<b>2</b>
<b>Structure</b>	<b>3</b>
<b>Contact</b>	<b>4</b>



---

## Introduction

This set of data, files and tools is here for detailing the development of a PicLink II interface.

You have following document:

- Documentation about the PicLink II interface, from global to detail.
- Data management tools for manipulating the PicLink II data files.
- Example data files.

You will need following software for using the documents described below:

- Windows XP or higher. The tools have not been validated for Mac OS.
- Excel 2007 or higher.
- Acrobat reader.
- A good text editor is advisable, but not mandatory, for manipulating the data files.  
We recommend UltraEdit.

---

## Structure

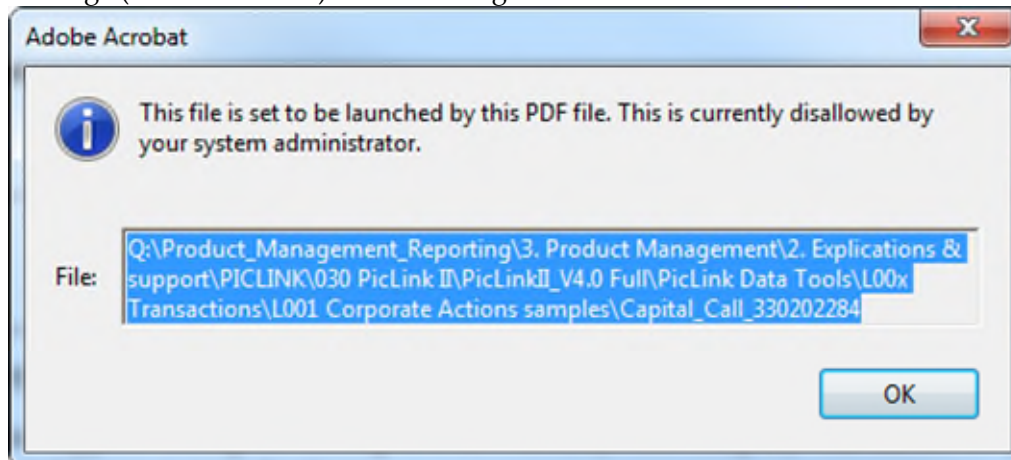
✎ The directory structure described below should not be changed and the documents in the sub-directories should not be moved elsewhere because there are links between the documents that will not work anymore if done so.

The “**PicLinkII\_Vx**” directory can be placed anywhere, on a local or network drive.

Only the PicLink II data file samples can be placed anywhere.

✎ Pay also attention to the version of the documents. The top directory, “PicLinkII” is followed by a version (example: PicLinkII\_ **V1.2**). It is important to always have the latest version. For getting the latest version, contact Mr. Carmelo Faro ([cfaro@pictet.com](mailto:cfaro@pictet.com)) or Mr. Michel Sideris ([msideris@pictet.com](mailto:msideris@pictet.com)).

✎ There are many links between the files. Be careful: Windows is limited to 256 character for a path, including the filename. If the PicLink documentation is too deep, you will get this kind of error message (from a PDF file) when clicking on a link:



You will see the following sub-directories in the **PicLinkII\_Vx** directory:

- “**Documentation**”. Includes following documents:
  - “**PicLink General Presentation-GB.pdf**”. This document gives you a global overview on the PicLink II interface and also other useful information, such as daily delivery dates, etc. **To read first.**
  - “**PicLinkII FAQ.pdf**” provides answers to the most commonly asked questions about the PicLink II format.
  - “**PicLink II Reference Manual.pdf**” is a bit the “bible” for developing a PicLink II interface. This document gives many useful technical details.

- 
- **“PicLink Data Tools”**. Includes following documents:
    - **“[PicLinkDataManager User Guide.pdf](#)”**. This document is the user guide for the data viewing and manipulating tools contained in this directory.
    - **“[PicLink2.xlsm](#)”**. Main tool. Allows to load and view the content of a PicLink II file in row structured mode.
    - **“[Piclink data mapping.xlsx](#)”**. This document is very important. It shows the detail and the description of all fields of all PicLink II records. This is really the reference. In addition, it shows the main fields and some useful information. It allows also to display one record in column mode. For more information about that tool see the “Introduction” Tab. The “List of records” Tab gives an overview and a description of all available PicLink II records. **Please read first.**
    - **“Code description”** sub-directory contains several files explaining certain codes contained in the PicLink II structure. One of the most important is the “Transaction codes PicLink.xls” that explains all available transaction codes.
    - **«L00x Transactions”** (L001.pl2 – L006.pl2). These files are scrambled sample PicLink II transaction files. They show you how PicLink II transaction data looks like. This directory contains certain sub-directories containing specific transaction types, among them corporate actions samples. These files can be loaded with the “PicLink2.xlsm” tool to view the data in structured mode. You can mix this sample data with your PicLink II files if you have some. These sample files are extracted from real portfolios, simply scrambled.
    - **«L1xx Valuations”** (L100\_xxx.pl2). These files are scrambled sample PicLink II valuation files. These files can be loaded with the “PicLink2.xlsm” tool to view the data in structured mode.
    - **«L2xx Master file”** (L2xx\_xxx.pl2). These files are scrambled sample PicLink II valuation files. These files can be loaded with the “PicLink2.xlsm” tool to view the data in structured mode.

## Contact

- Carmelo Faro (cfaro@pictet.com).
- Michel Sideris (msideris@pictet.com).
- Christian Studer (cstuder@pictet.com).